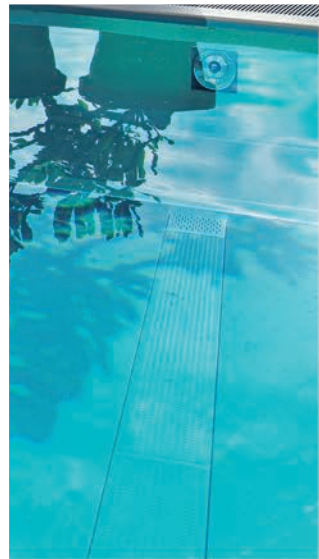




 **INOXline**  
STAINLESS STEEL POOLS



# EUROPE'S LEADING MANUFACTURER OF POOLS AND POOL ENCLOSURES

Since its introduction to the market in 1994, the Diamant Unipool s.r.o. company has completed more than 20,000 projects making it one of the leading pool manufacturers in Europe.

Since the beginning, we have focused on the high quality of our pools and enclosures and we have never resorted to mass production of inferior quality products. We invest significant resources into the development and innovation of our products each year. We do not copy other companies' ideas but implement our own. Many of our associates have been in our company since the beginning and thanks to their experience we are able to fulfil even the most demanding customer requests.

We keep in mind that it is you, our customers, that allow us to continue the work we love. The satisfaction of our customers and good reputation of the Diamant Unipool s.r.o. company is our primary goal.



Ing. Martin Lukáš - owner

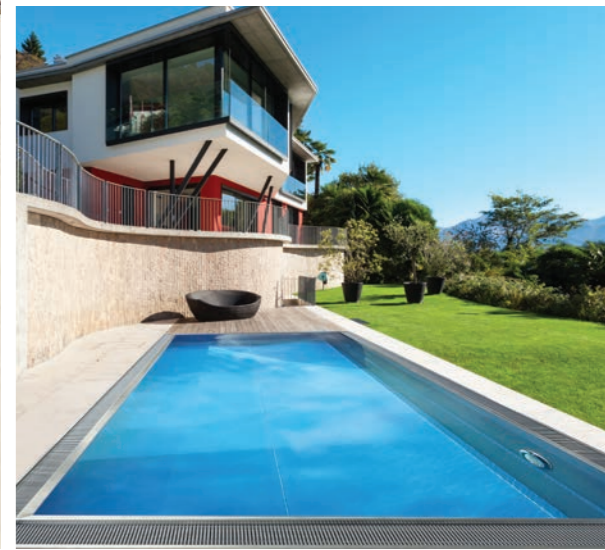


In 2020, a new 7,000 m<sup>2</sup> production hall for stainless steel pools was completed and all production is carried out at our 17,000 m<sup>2</sup> site in Valašské Meziříčí.

## FOR YOUR STYLISH HOME

High-quality, stainless steel pools are becoming more and more popular. This is not only due to the modern, timeless appearance of the material and its simple elegance, but also thanks to the unique properties of stainless steel, such as resistance to frost, heat and UV radiation. The smooth stainless steel surface also provides perfect conditions for optimal hygiene while minimizing maintenance. Its greatest advantage, however, is its lifespan.

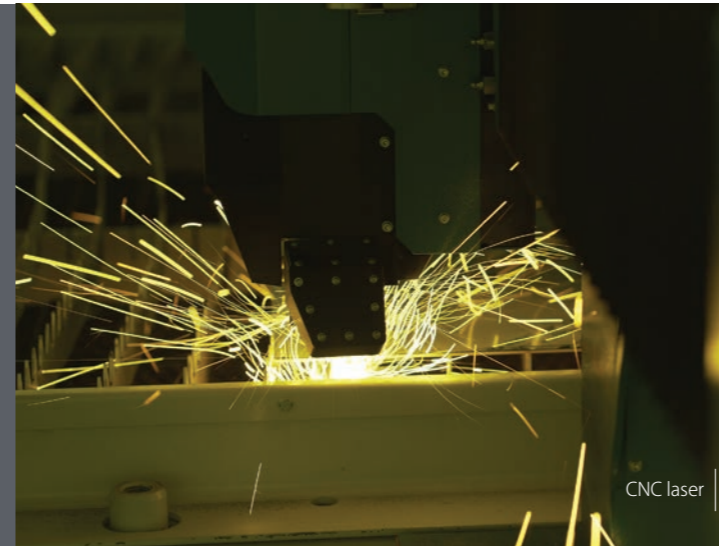
**STAINLESS STEEL  
POOLS INOXLINE**



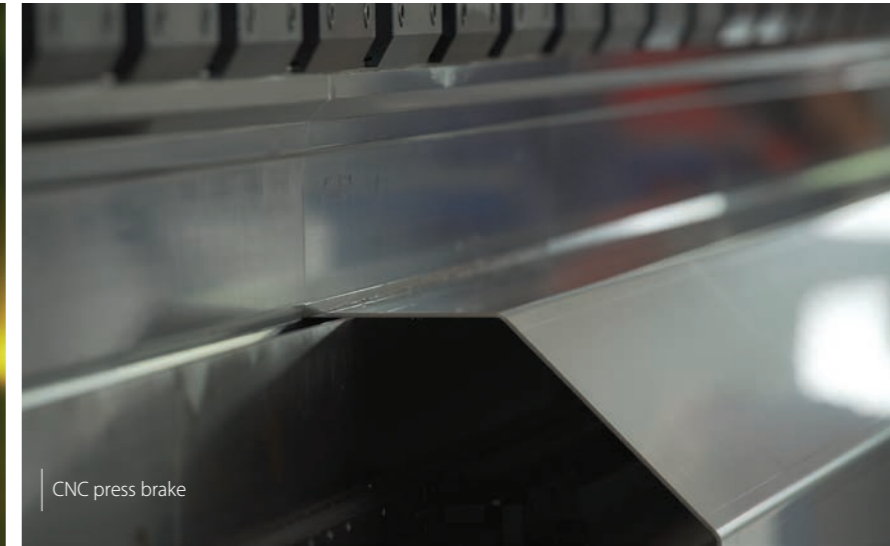


## A STATE-OF-THE-ART POOL PRODUCTION PROCESS

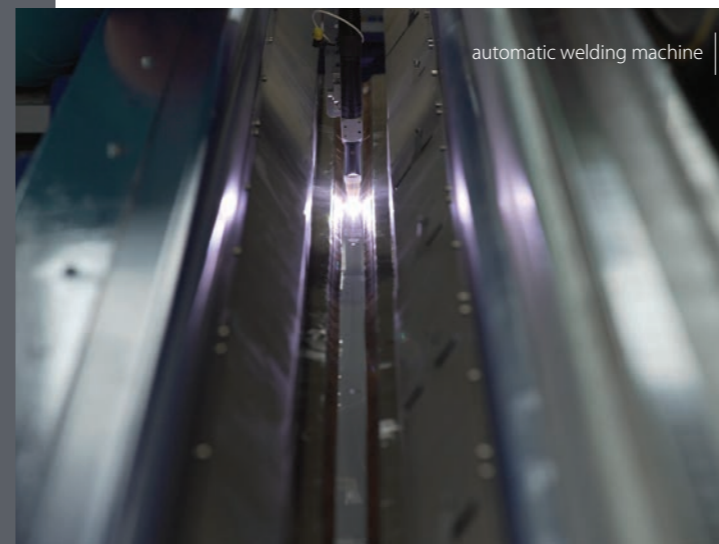
- ▶ we prepare the production documentation
- ▶ we cut the stainless steel sheets and create the holes (CNC laser)
- ▶ we fold the walls and bottom sheets (CNC press brake)
- ▶ we press the treads into the sheets of the bottom and steps (CNC punching press)
- ▶ we weld the bottom and steps (automatic welding machine)
- ▶ we robotically weld longitudinal and vertical welds (welding robot)
- ▶ we prepare the pool reinforcements and their attachment
- ▶ we weld the steps, bench and components to the pool walls
- ▶ we chemically clean the welds and passivate the entire pool
- ▶ we install bracing and packaging for transport



CNC laser



CNC press brake



automatic welding machine

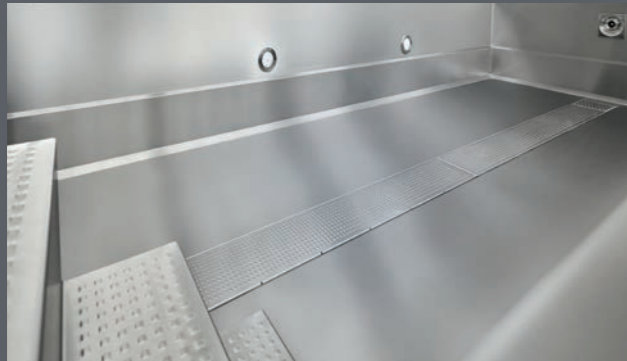


welding robot



## UNIQUENESS of DIAMANT INOXline pools

### 1. ENTIRELY WELDLESS WALLS



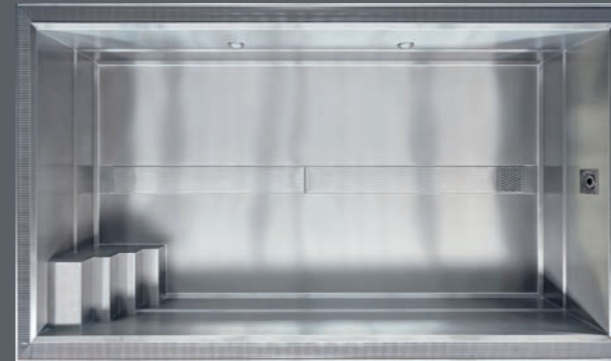
The INOXline pool proudly presents walls that are entirely weldless to a length of 10 m. This unbeatable characteristic ensures perfectly straight walls and eliminates the risk of corrosion. It's appearance is unblemished, without unsightly welds along the entire length of the pool.

### 2. USE OF HIGHLY ADVANCED TECHNOLOGIES



Only Diamant INOXline pools are welded on a state-of-the-art robotic line, guaranteeing them the unique quality and aesthetics of their welds. Ours are the only pools on the market manufactured with this revolutionary technology. The quality of the structural welds does not depend on human factors and meets the highest standards. Other specific welds are made by highly trained welders, who then carry out all the necessary quality controls.

### 3. „AL-FA“ ALL in Factory SYSTEM



We deliver the pool fully finished and in one compact piece directly to the site. This means we can shorten installation time and reduce associated costs. Stainless steel pools pre-fabricated on the factory floor lead to less debris, noise and foot traffic at the installation site. Projects can be installed in less time and can be ready for filling with water within a few hours of installation. Leak-proofing, passivation and insulation are carried out at the factory.





## BENEFITS YOU WILL APPRECIATE

### 1. REINFORCED WALLS

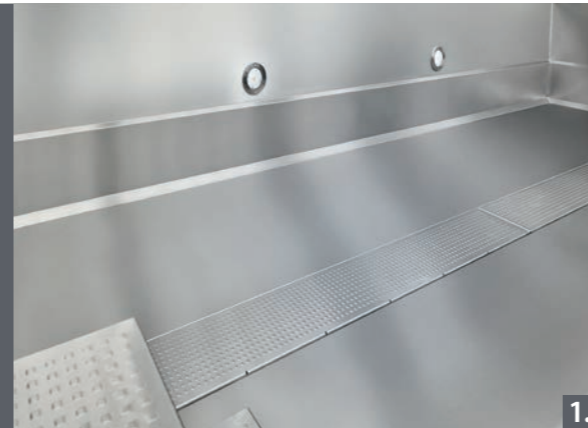
The walls of the pool are reinforced with two horizontal folds to ensure the highest possible stability and strength of the entire structure.

### 2. INTEGRATED INSULATION AND REINFORCEMENT

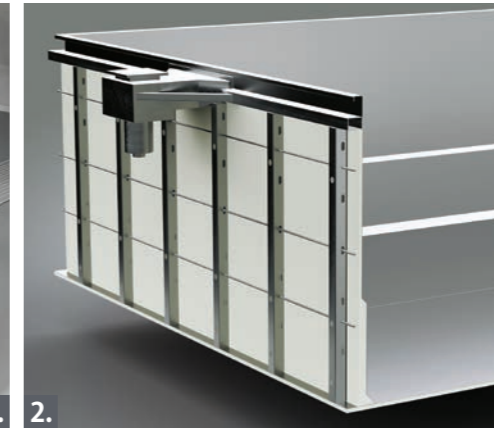
The walls and floor of the pool are delivered to the installation site including insulation and reinforcement. The insulation on the pool wall is from 2 to 5 cm thick, on the bottom it is 10 cm.

### 3. STAIRS AND BOTTOM WITH RAISED ANTI-SLIP SURFACE

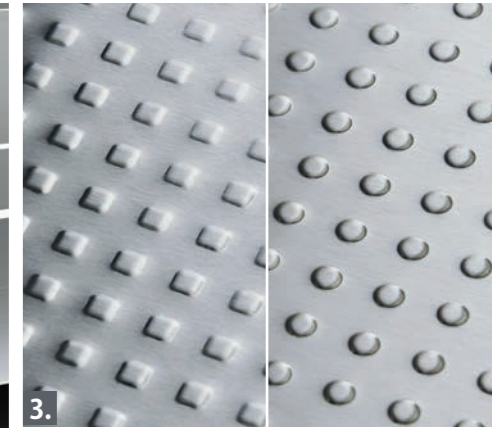
The stairs and bottom (on request) have an aesthetic raised-square or raised-circle pattern, which ensures safe use without the risk of slipping.



1.



2.



3.

### 4. STAINLESS STEEL COMPONENTS

INOXline pools are equipped with all-stainless steel components from primary manufacturers. The components are welded directly to the pool-body plates, without the use of screws or seals. The great advantage of this approach is to minimize the risk of any future leakage.

### 5. MAIN DRAIN CHANEL

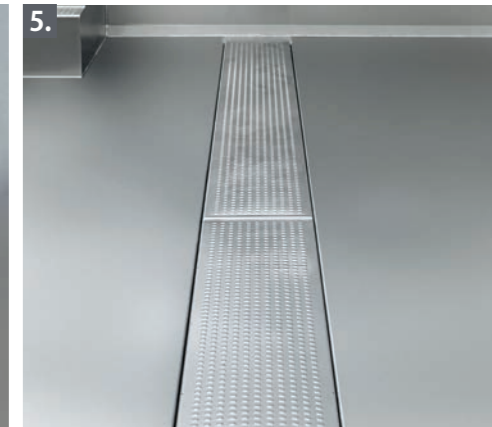
This specific system ensures uniform, optimal, water circulation and highly efficient water cleaning. The channel, with its anti-slip surface, runs the full length of the pool and is equipped with multiple inlet holes. No nozzles are needed on the walls and so no pipework is required around them. The bottom suction is integrated into the drain channel.

### SHAFT FOR SLATTED POOL COVER

The shaft allows the underwater-level pool-cover to be installed in a panel on the shorter side of the pool. The cover itself, therefore, does not interfere with swimming and is completely covered with a removable panel to ensure maximum safety.



4.



5.

# THE FUTURE BUILT ON STAINLESS STEEL

# Modern, exclusive and clean design



# Long service life without loss of quality



# Hygienic, smooth and non-porous surface with antibacterial effects



# Color fastness and high mechanical and thermal resistance



# Easy maintenance and low-cost operation



# 100% recyclable



The high-quality AISI 316L stainless steel used for Diamant INOXline swimming pools offers a range of excellent production options and guarantees long lifespan, maximum stability and durability. The steel known as "Austenitic stainless steel" is an alloy of several metals, such as chromium, nickel, carbon and molybdenum. It is a multifunctional material that gives the pool a fresh, luxurious and modern look and is an ideal choice for outdoor use.

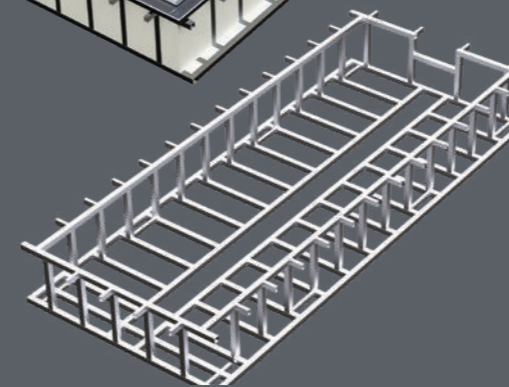
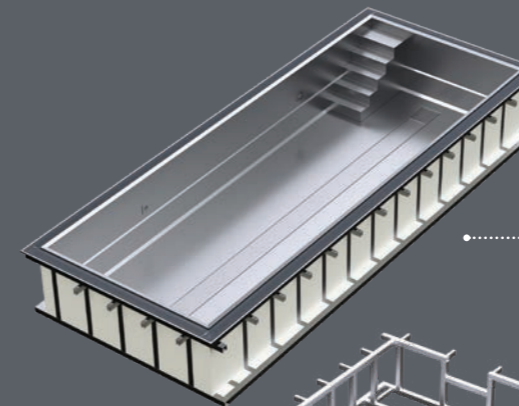
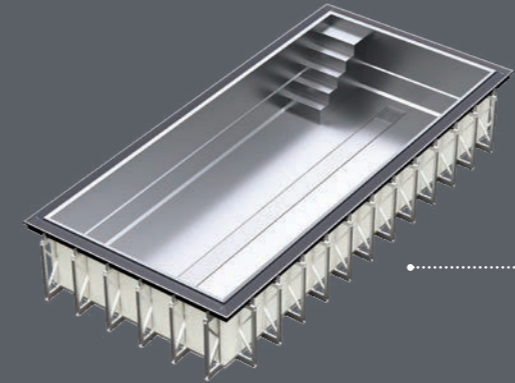
## OVERFLOW POOL INOXline

Overflow pools are popular for their filtration efficiency and exclusive design. The water level reaches the top edge of the pool and corresponds to the actual pool depth. Any floating material is immediately drained into the overflow channel around the entire perimeter of the pool and efficient recirculation of the water guarantees its cleanliness.

Maximum internal dimensions\*

\* distance between pool walls below the top

Length: 1000 cm  
Width: 330 cm  
Depth: 134-150 cm



## INSTALLATION VARIANTS

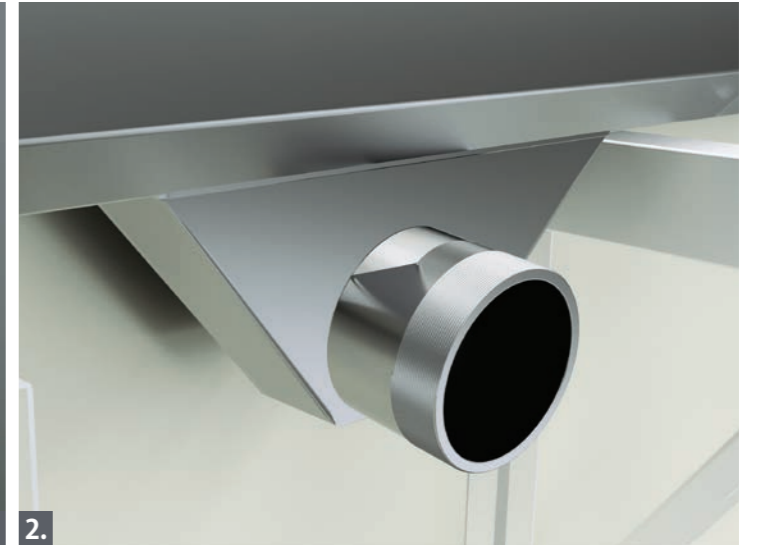
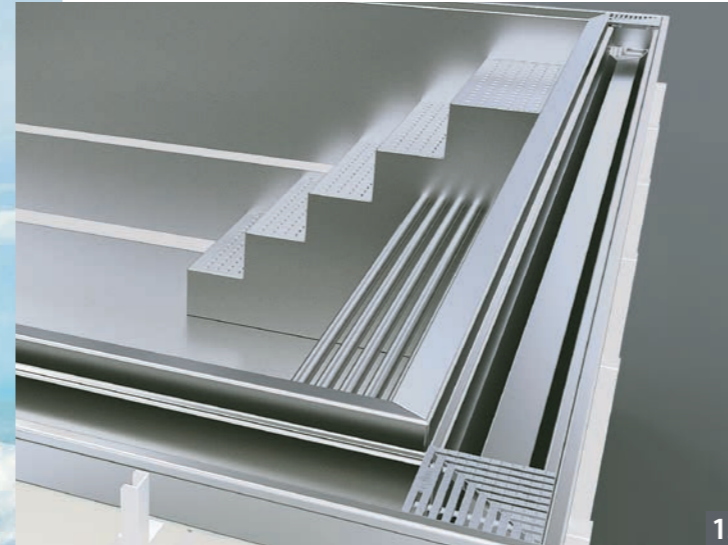
### STANDARD WITH REINFORCEMENTS

In-ground pool for concreting or backfill. Version for poured concrete or gravel backfill. Installed and anchored to a concrete foundation base with side-supports. After anchoring, the pool is filled with water and backfilled with poured concrete or gravel.

### FREE-STANDING **NEW**

Above-ground pool, free-standing construction - self-supporting model with a solid frame, when embedment is not necessary. The pool is anchored to a concrete foundation base for correct levelling.

Ensures ease of integration into any setting, so the product will surpass any project requirements. Recommended for terraces, roofs or for sloping terrain.



### 1. EASY CLEAN OVERFLOW CHANNEL

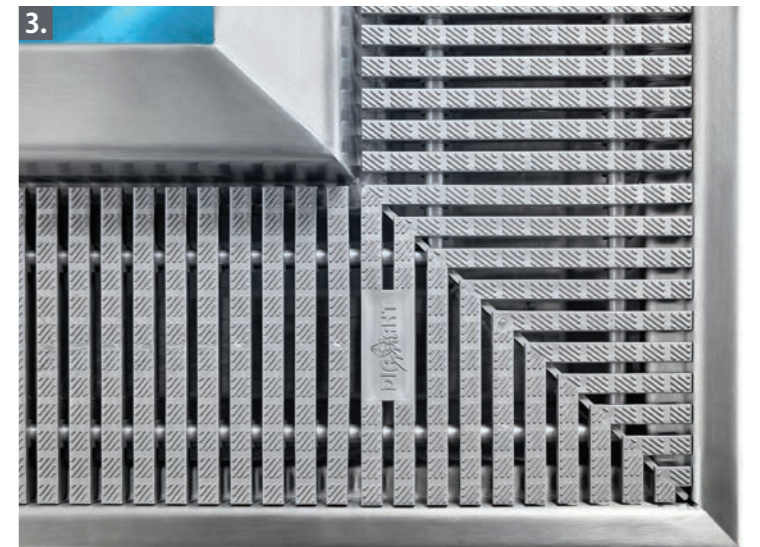
The overflow channel with its Easy Clean system does not contain any internal reinforcements, its strength being ensured by an external structure. This gives the advantage of simple, fast, obstruction-free, mechanical cleaning.

### 2. V-FLOW SILENT SUCTION

Specially designed drains from overflow channels optimize the flow of water and thus ensure its fast outflow. Furthermore, they reduce noise by up to 50%, compared to standard overflow channels.

### 3. DIAMANT DESIGN OVERFLOW GRATING

Our newly developed and highly functional stainless-steel-like grating is made of high quality, durable polypropylene. This ensures rapid, effective drainage. The choice of material completely eliminates the possibility of corrosion in this otherwise very exposed area.



## SKIMMER POOL INOXline

The skimmer pool is the most widely used type, especially for private projects. It is a simple, efficient system with trouble-free operation. Water from the pool is drawn into a collector - the skimmer - from where it is pumped to the filtration system. This is a popular solution for those who require the luxury of a stainless steel garden pool with a minimum of operational intervention.

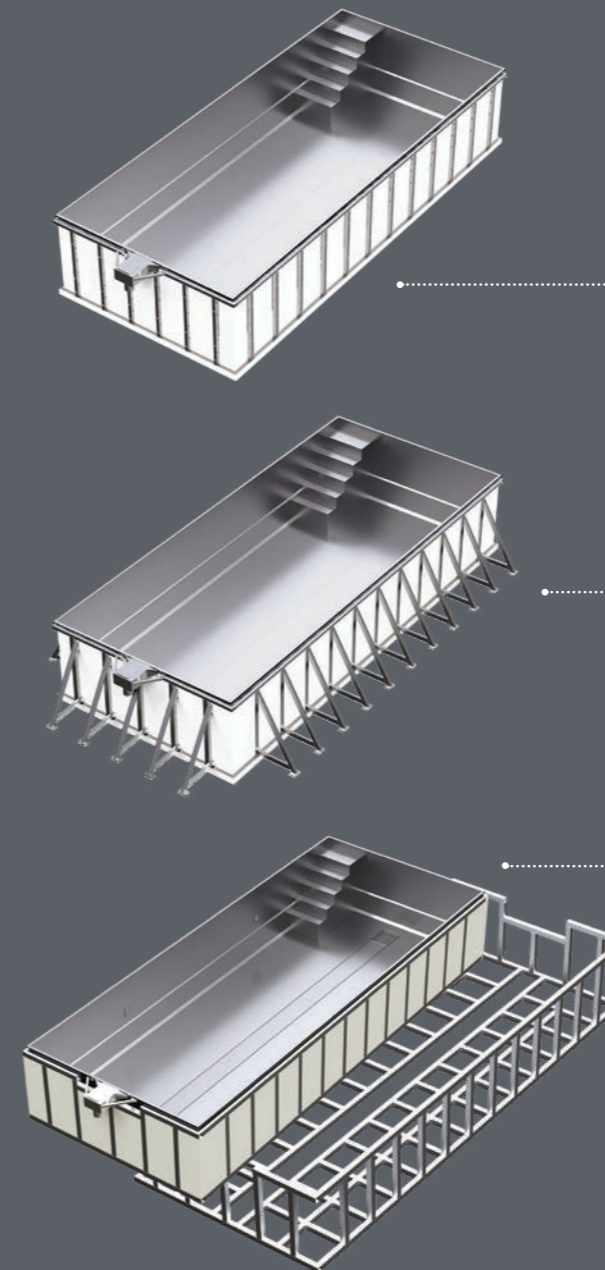
Maximum internal dimensions\*

\* distance between pool walls below the top

Length: 1000 cm

Width: 350 cm

Depth: 140-150 cm



## INSTALLATION VARIANTS

### STANDARD

In-ground pool for concreting. Right variant for poured concrete: the pool is placed on a concrete base and filled with water, while the side walls are backfilled with a dry or semi-dry concrete mix for reinforcement.

### WITH REINFORCEMENTS

In-ground pool for backfill. Variant for gravel backfill: the pool is placed on a concrete base and filled with water, while the side walls are backfilled with gravel. The heavy-duty reinforcement is installed on site.

### FREE-STANDING **NEW**

Above-ground pool, free-standing construction - self-supporting model with a solid frame, when in-ground installation is not necessary.

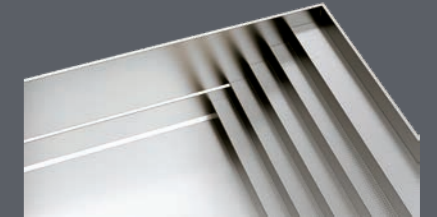
Ensures ease of integration into any setting and so the product will surpass any project requirements. Recommended for terraces, roofs or for sloping terrain.



## VARIANTS OF ENTRANCES TO SWIMMING POOLS AND REST BENCHES

Choose the entrance staircase to your pool according to your wishes. The stair treads have an aesthetic pattern of raised squares or circles, which ensures their safe use without the risk of slipping.

A comfortable rest bench will not only provide you with a relaxation zone, but can also be used to store the slatted pool cover.



steps along the entire pool ISTF



square diagonal steps ISTJ



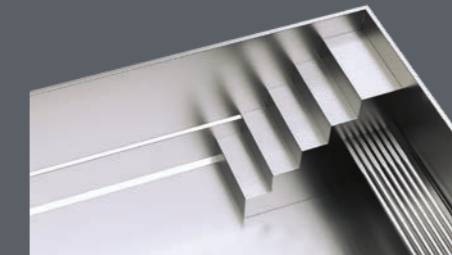
square corner steps ISTB



cantilevered steps ISTX



square steps ISTC



tubular bench



bench for slatted pool cover



Counter current systems



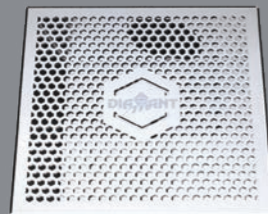
Skimmers



Handrails



Nozzles



Bottom suction inlet



Lights



## ACCESSORIES

INOXline pools are equipped with only the highest quality, branded components from our long-term partners. All components are rigorously tested and their high-quality stainless steel processing is a guarantee of long life and minimal maintenance requirements.



Diamant Unipool s.r.o. | [www.diamant-unipool.eu](http://www.diamant-unipool.eu) | [info@diamant-unipool.eu](mailto:info@diamant-unipool.eu)



All pictures shown are for illustration purposes only. Actual products may vary due to product enhancements.  
Copyright © 2022 Diamant Unipool: No part of this publication may be reproduced in print or digital form without the prior written authorization of Diamant Unipool.